

Ball Float Steam Trap

FT14 Screwed & Flanged



Ball Float Steam Trap

FT14 Screwed & Flanged

Application

Ball float steam traps are extremely versatile and work efficiently on both light and heavy condensate loads. Although compact in size, their discharge capacity is high and continuous,

ensuring maximum heat transfer. These traps are the best choice for draining plant with automatic temperature control.

Ball Float Steam Trap

FT14 Screwed & Flanged



Size and pipe connections

DN15–DN25 Screwed BSP or NPT
DN15–DN25 Flanged EN 1092 PN16/PN25, ANSI 150

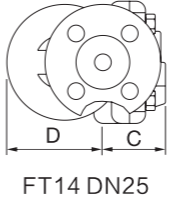
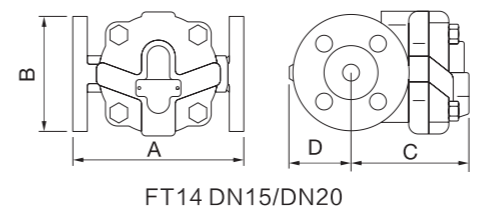
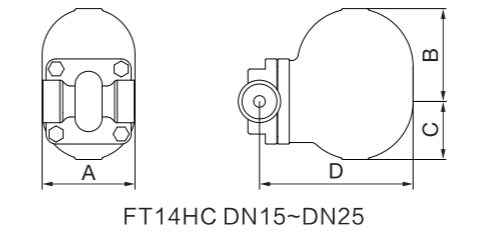
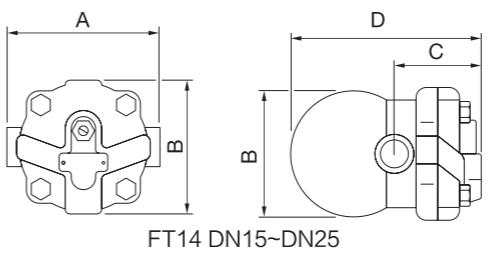
Material

Part	Material
Body/Cover	A216 WCB
Cover bolts	A193 B7
Cover gasket	graphite+SS304 or ss316
Valve seat	A276 430
Ball float and lever	A240 304
Air vent assembly	A240 304

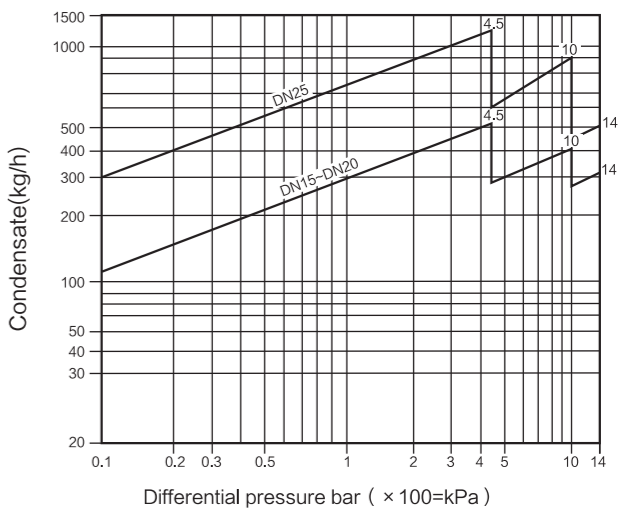
Note:1.The material can according to the customer' s request or actual valve working condition.
2.The surface of valve can use high temperature resistant black or blue paint, but also can according to the customer' s request.

Limited condition

Body design conditions	PN25
PMA Maximum allowable pressure	25Bar g
TMA Maximum allowable temperature	300℃
Maximum differential pressure (ΔPMX)	14Bar



Capacities



Installation

Horizontal connections with flow from right to left.
Horizontal connections with flow from left to right.
Vertical connections with flow downwards.

Standard

Design standard: ISO6552; EN26704
Face to face dimension: EN26554
Test & inspection: EN26948

Dimensions/weights(approximate)in mm and kg

FT14 Screwed					
Size	A	B	C	D	Weight
DN15	121	107	67	147	2.8
DN20	121	107	67	147	2.8
DN25	145	107	67	166	4

FT14HC Screwed					
Size	A	B	C	D	Weight
DN15	121	120	75	198	8.8
DN20	121	120	75	198	8.8
DN25	121	120	75	198	8.8

FT14HC Flanged					
Size	A	B	C	D	Weight
DN15	150	107	101	55	4.5
DN20	150	107	101	55	5.0
DN25	160	70	70	100	6.5